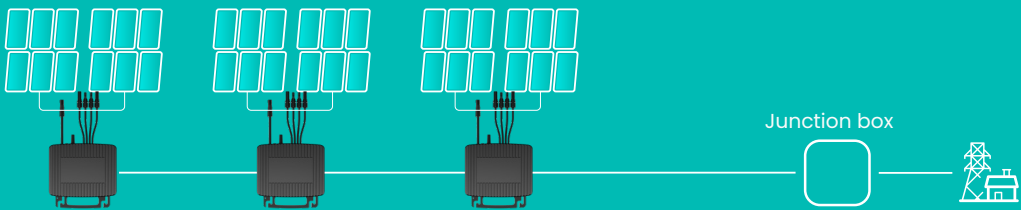
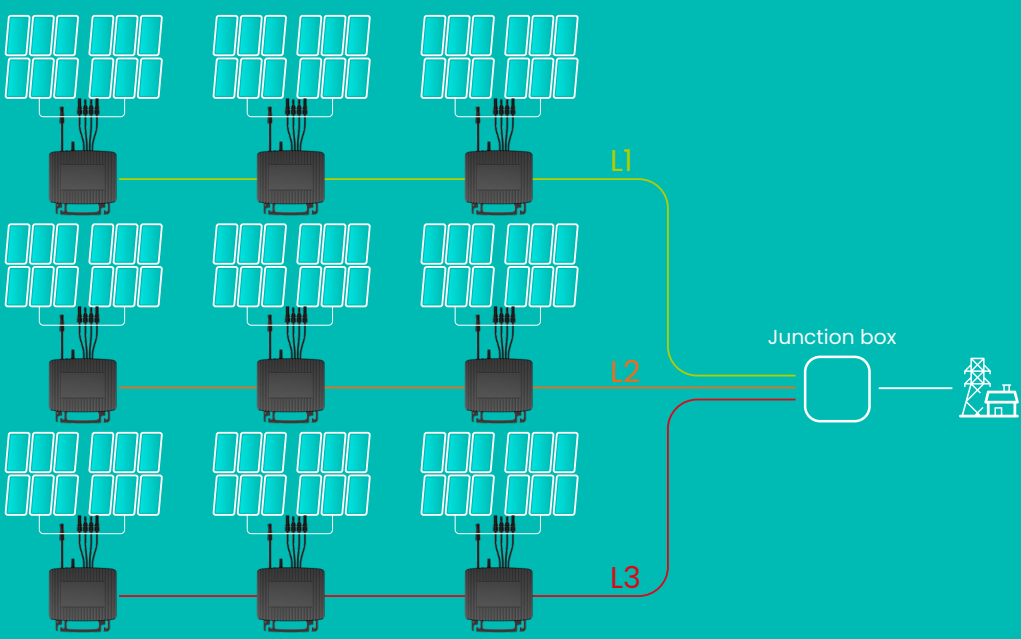


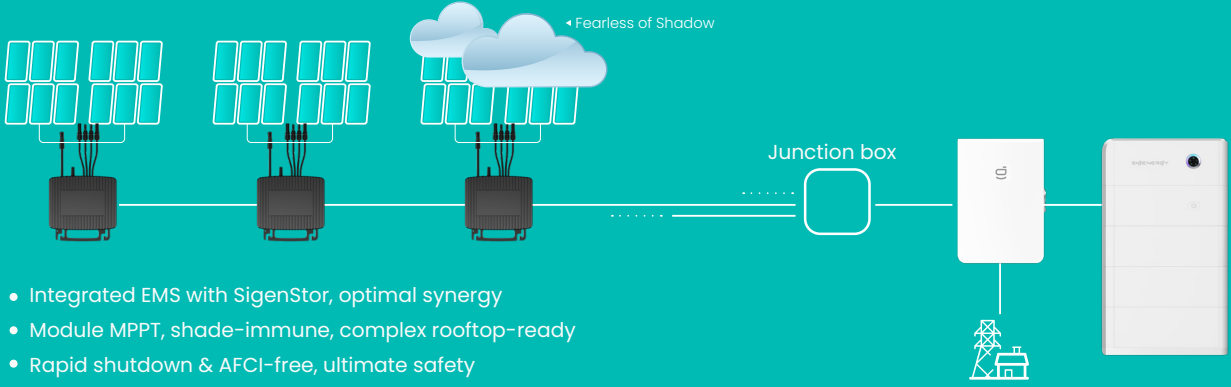
On-Grid PV Only (Single Phase)



On-Grid PV Only (Three Phase)



Micro-Grid PV+ESS (Single Phase / Three Phase)



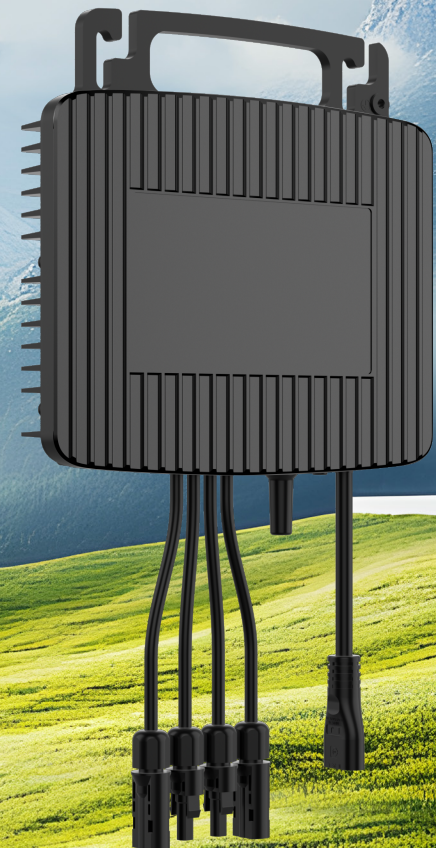
- Integrated EMS with SigenStor, optimal synergy
- Module MPPT, shade-immune, complex rooftop-ready
- Rapid shutdown & AFCI-free, ultimate safety



Sigenenergy focuses on developing cutting-edge home and business energy solutions, with products ranging from energy storage systems to solar inverters and EV chargers. Our world-class R&D team of hundreds of top industry experts shares the vision of making the world greener via continuous innovation. With global sales and services, we aim to become our customers' most trusted partner on their journey to a more sustainable future.

www.sigenenergy.com

Disclaimer: The information in this file is provided on an "as is" basis. To the fullest extent permitted by law, Sigenenergy Technology Co., Ltd. excludes all representations and warranties relating to this file and its contents or which is or may be provided by any affiliates or any other third party, including in relation to any inaccuracies or omissions in this file.



SigenMicro Inverter

1-in-1 400 / 500W 2-in-1 800 / 1000 W



Rooftop solar

Boost earnings with module-level MPPT



Balcony solar

Turn your balcony into the fortress

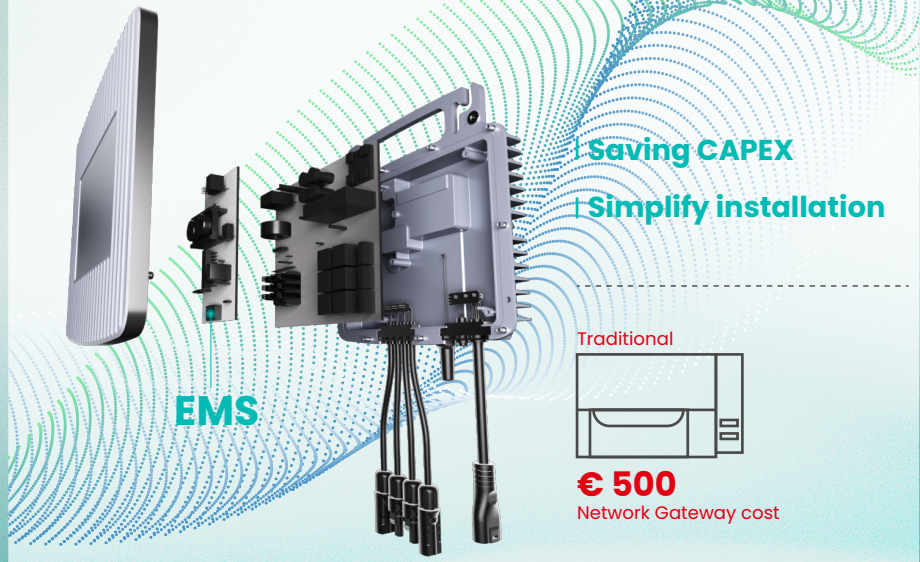


Revolutionize installation speed with AI layout recognition



Saving
90%
Installation time

EMS inside,
free from network gateway



97.5%

High efficiency

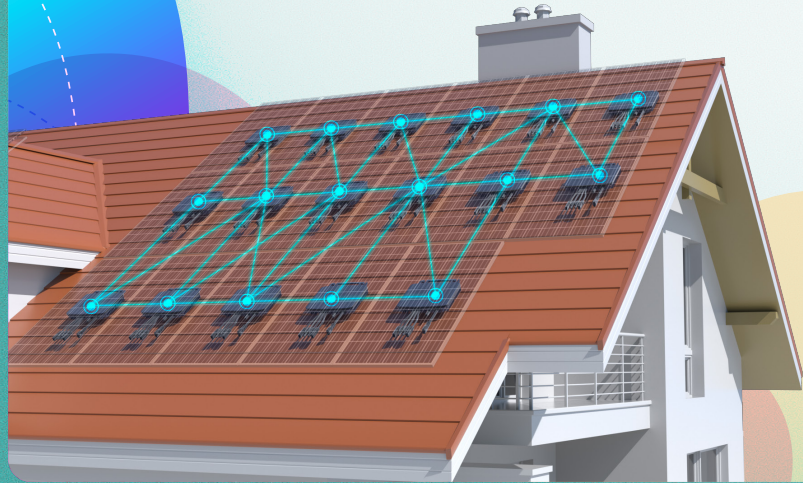
The highest efficiency at the 1kW power level.

Module-level MPPT

Fearless of shadow, ideal for complex rooftops
Boost every ray of sunshine

Innovative Mesh Comm.

The world first in the industry to apply Mesh technology to the MLPE field



- Auto-networking

Effortless setup, instant expansion.
- Self-healing

Ultra stability, zero downtime.
- High-coverage

Mesh blankets every corner

Perfect Synergy with SigenStor

Module-level mgmt. for higher efficiency & safety

IP67 Protection

Durable in harsh environment

SigenMicro Inverter

Preliminary

SigenMicro	400			500			800			1000			Units	
DC Input														
Commonly used module power	320 ~ 540+			400 ~ 670+			(320 ~ 540+) x 2			(400 ~ 670+) x 2			W	
Start-up voltage	20													V
Min. / Max. PV input voltage	16 ~ 60													V
MPPT voltage range	16 ~ 60													V
Number of modules connected	1			1			2			2				
Max. input current	16 x 1			16 x 1			16 x 2			16 x 2			A	
Max. input short-circuit current	25 x 1			25 x 1			25 x 2			25 x 2			A	
AC Output														
Grid type	Single Phase													
Nominal output power	400			500			800			1000			W	
Nominal output current	1.82	1.74	1.67	2.27	2.17	2.08	3.64	3.48	3.33	4.55	4.35	4.17	A	
Nominal output voltage	220	230	240	220	230	240	220	230	240	220	230	240	V	
Nominal output voltage range ¹	184 ~ 275													V
Nominal grid frequency	50 / 60													Hz
Grid frequency range ¹	45 ~ 55 / 57 ~ 63													Hz
Total current harmonic distortion	THDi < 3% (at nominal power)													
Power factor	0.8 leading ~ 0.8 lagging													
Max. units per branch ² (2.5 mm²)	8	9	9	7	7	7	4	4	4	3	3	3		
Max. units per branch ² (4.0 mm²)	13	13	14	10	11	11	6	6	7	5	5	5		
Efficiency														
Max. efficiency	97.5%													
European efficiency	96.7%													
Monitoring & Protection														
Grid monitoring	Supported													
Ground fault detection	Supported													
PV module-level monitoring	Supported													
Rapid shutdown	Supported													
Surge protection	Supported													
General Data														
Dimensions (W / H / D)	232 / 186 / 35 (without bracket)													mm
Weight	2.8													kg
Storage temperature range	-40 ~ 85													°C
Operating temperature range	-40 ~ 65													°C
Relative humidity range	0% ~ 100%													
Max. operation altitude	4000													m
Cooling	Natural convection													
Topology	High Frequency Transformers, Galvanically Isolated													
Night power consumption	< 50													mW
Ingress protection rating	IP67													
Display	LED													
Communication	WLAN													
AC connection type	Plug and play connector													
Installation method	Bracket mounted													

1.

Nominal output voltage range and grid frequency range can vary depending on local requirements.

2.

Limitations may differ by region. For the exact number of microinverters permitted per branch circuit, please refer to local regulations and standards.

3.

SigenMicro is only available in specific regions. Please contact Sigenergy or local distributors for details.